

Experience the world's first long-range solar car



Using clean energy to drive



Replacing
power
plants



Increased
demand;
upgrade grid



Roof panels
needed for
households



Install 1 billion
charging points



Replace 1
billion cars

Leapfrogging the grid



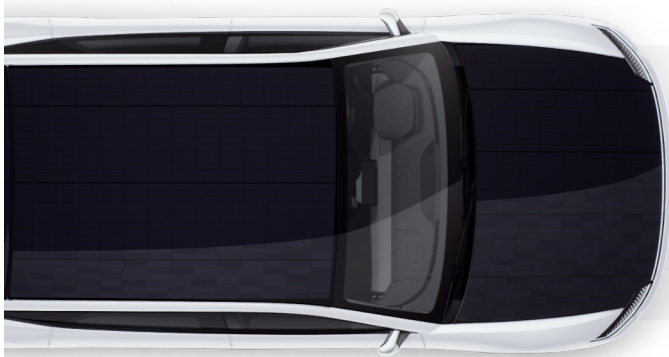
Lightyear at a glance: world's' first Solar EV platform

Company overview

- Founded in 2016, Lightyear has **circa 550 employees** and is **headquartered in Helmond, Netherlands**
- Lightyear has developed the **most energy-efficient electric vehicle** backed by an IP portfolio with currently **over 57 patents**
- Established network of **partnerships** with **leading suppliers**



Lightyear



Range
625 km
>2x more range
vs. most EV peers

Charging
Requires 5x less charging
vs. most EV peers
Continuously charged with solar panel

Source: Company information

Incoming Lightyear 0 to pave the way
for mid-term Lightyear Two production

—
Show the potential, build the brand
Lightyear 0



- **Brand builder:** Ultimate freedom, drive anywhere
- First market **demonstration of Lightyear technology**
- Solar-powered long-range vehicle assembled by Valmet

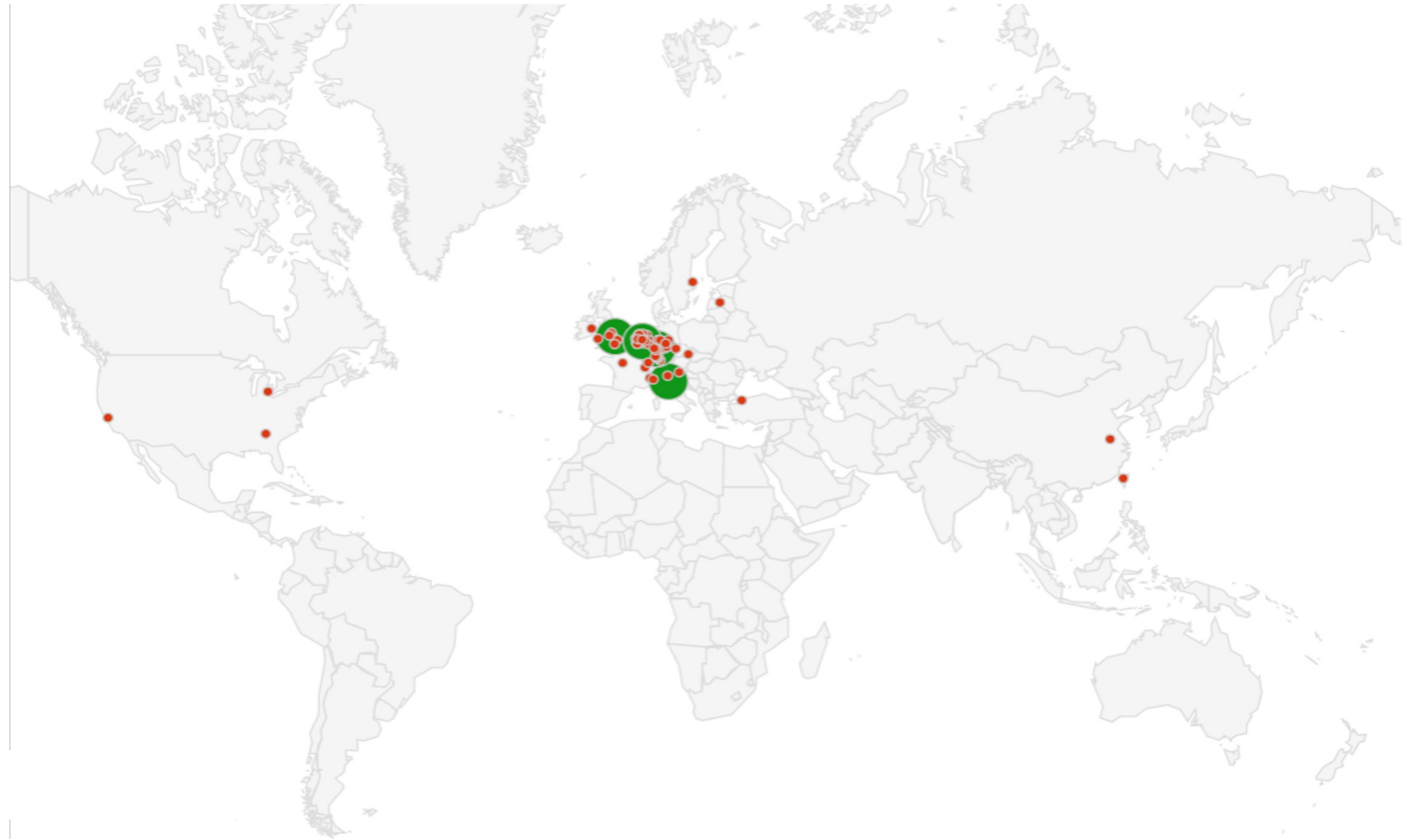
Mass market, setting new standards
Lightyear Two



- **Lightyear Two** anticipated to be introduced in EU & US
- Specs proven by Lightyear 0
- Expected to be category leading for longest range & charging comfort
- Solar-powered long-range vehicle

Lightyear ES at a glance

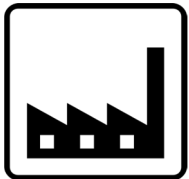
- Number of suppliers 130+
- The majority of our suppliers are based in Europe
- Key decision: supply chain sustainability by design



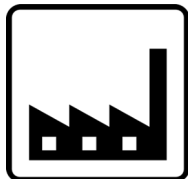
Supply Chain Setup - Series



2nd Tier Suppliers



1st Tier Suppliers



Lightyear Warehouse Consolidation Center (Oostrum, NL)

Road

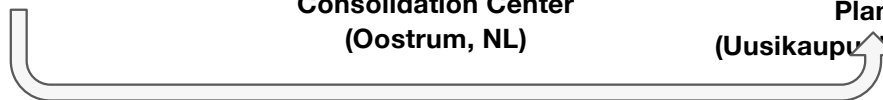


Valmet Car Assembly Plant (Uusikaupunki, Finland)

Road



Lightyear HQ (Helmond, NL)



Direct Delivery to Valmet

Logistics at the speed of light

From concept to delivery of a vehicle

Going slow when speed is necessary

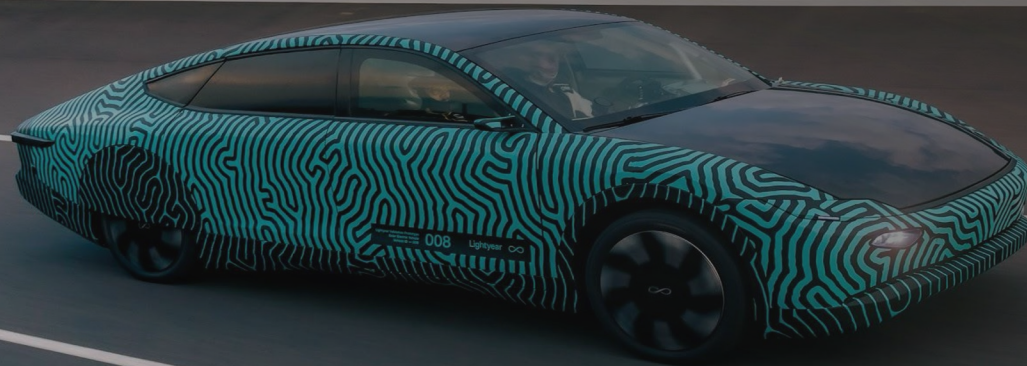
Chain steering with suppliers.

If you have a problem we have a problem

The foundation of a solid chain for lightyear 2



Truly scalable clean cars

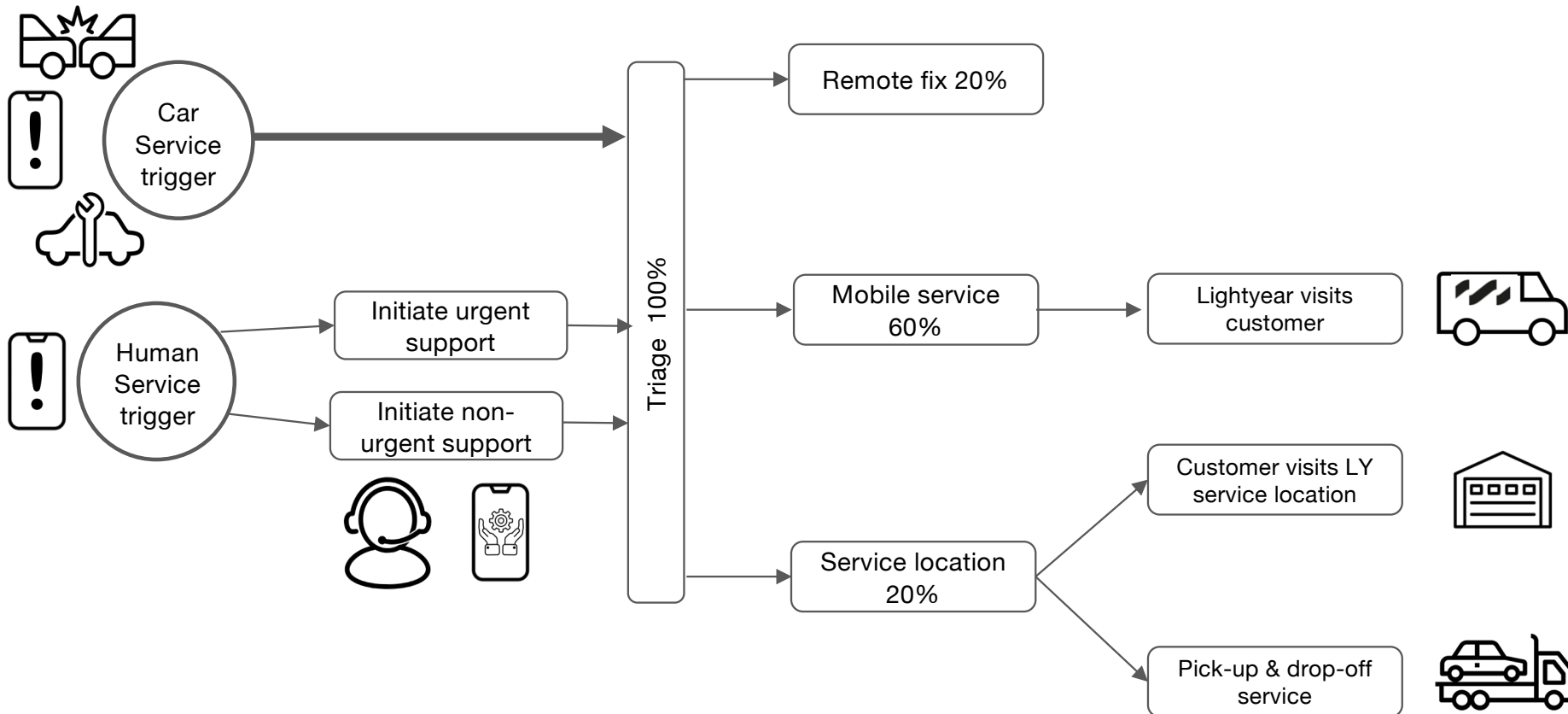


Lightyear is a company on a mission to develop revolutionary technology and change the world of mobility.

Lightyear

www.lightyear.one

Service is all about **customer experience**



Sustainable **service**

- Blue diesel ready service van → **all electric** in 2025
- **Pre picking of parts**
- Make use of **existing aftermarket supply chains**
- All parts will be **returned** and reused/refurbished/recycled

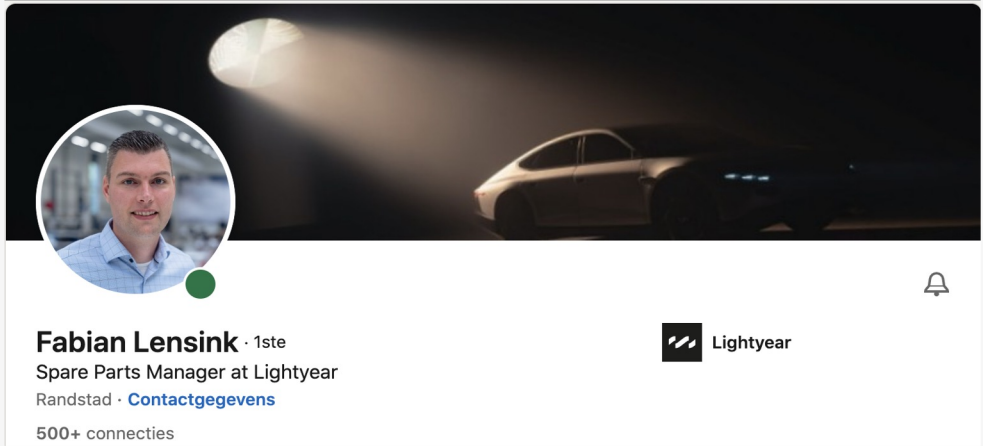


A photograph of a diverse group of people in an audience. In the foreground, a man with a beard and a white shirt is looking thoughtfully to the side, with his hand near his chin. Other people are visible in the background, some looking towards the camera and others looking away. The lighting is soft and indoor.

**We are on
a mission**

Will you join?

Lightyear



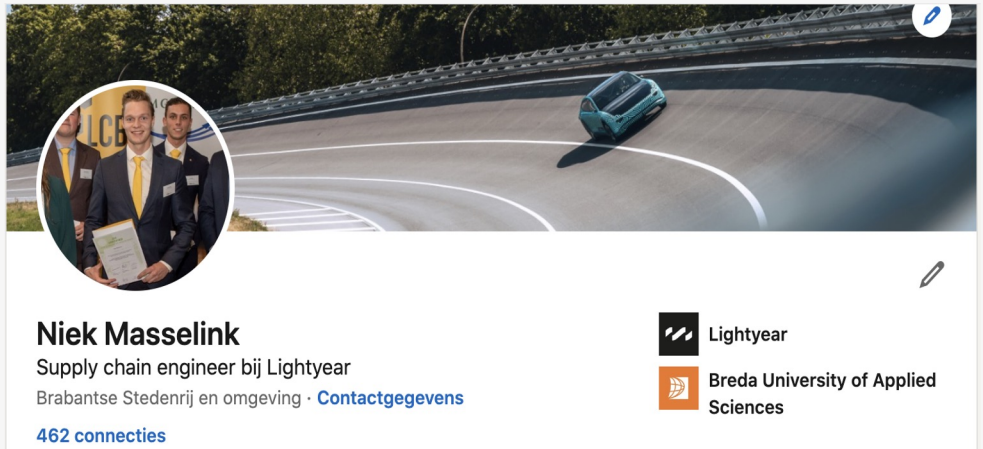
Fabian Lensink · 1ste
Spare Parts Manager at Lightyear
Randstad · [Contactgegevens](#)
500+ connecties

Lightyear

This LinkedIn profile card for Fabian Lensink features a circular profile picture of a man in a light blue shirt. The background image shows a sleek, futuristic car in a dark setting with a spotlight effect. The card includes the Lightyear logo and a notification bell icon.



Thank you.



Niek Masselink
Supply chain engineer bij Lightyear
Brabantse Stedenrij en omgeving · [Contactgegevens](#)
462 connecties

Lightyear
Breda University of Applied Sciences

This LinkedIn profile card for Niek Masselink features a circular profile picture of a man in a suit holding a certificate. The background image shows a small, futuristic car on a racetrack. The card includes the Lightyear logo, the Breda University of Applied Sciences logo, and an edit icon.



V2.0 220609

www.lightyear.one